



KM-S4850w

PARTS LIST

Published in Oct.'02
843B0121
Revision1

Parts List

KM-S4850w

NOTE

1. Indicate parts number and machine model when placing an order.

eg. Parts Number	Parts Name	Machine Model	Cycle	Quantity
3B004010	FRONT COVER	KM-4850w	50Hz	1

2. Service calls and freight will be charged separately.

3. Symbols in the "Parts Number" column.

- Parts with "•" are component parts or sub-assemblies of the assembly appearing immediately above them.

eg. Parts Number	Parts Name	Parts Number	Parts Name
<i>2A701031</i>	<i>SCANNER MAIN PCB ASS'Y</i>	• <i>2A701140</i>	<i>SCANNER BOOT ROM ASS'Y</i>
		• <i>2A728031</i>	<i>SCANNER MAIN PCB</i>

- Parts with "●" indicates the spare parts.

4. See the last page of this parts list for the classification of the screws in the illustrations.

— CONTENTS —

FIG.1	EXTERIOR COVERS	2
FIG.2	FRAMES	4
FIG.3	ORIGINAL SET SECTION	6
FIG.4	DRIVING & ELECTRICAL COMPONENTS	8
FIG.5	ACCESSOREIS	10
	• INDEX	12

FIG. 1 EXTERIOR COVERS

3B0-1

SP	Ref. No.	Part. No.	Description	Quantity	
				120V	230V
	1	3B002070	MOUNT,UPPER FRONT RIGHT COVER	1	1
	2	3B002080	MOUNT,UPPER FRONT LEFT COVER	1	1
	3	3B002100	MOUNT,RIGHT COVER	1	1
	4	3B002140	MOUNT,LEFT COVER	1	1
	5	3B002150	MOUNT,UPPER COVER	2	2
●	6	3B004010	FRONT COVER	1	1
●	7	3B004020	RIGHT COVER	1	1
●	8	3B004030	LEFT COVER	1	1
●	9	3B004080	REAR COVER	1	1
	10	36527090	SHIELD 60,GASKET		4
	11	3B026040	INNER, REAR COVER	1	1
●	12	2AR93270	PARTS,LCD PCB(SP)	1	1
	13	2AZ13171	MOUNT,ORIGINAL HOLDER	2	2
	14	2AZ13180	GUIDE,ORIGINAL LOOP	1	1
	15	2AZ13190	COLLAR,ORIGINAL LOOP	2	2
	16	2AZ13321	HOLDER,ORIGINAL	2	2
	17	3AV27010	SHIELD,GASKET(230V Only)		1
	18	2A704120	MOUNT,HINGE COVER	1	1
●	19	2A704151	UPPER RIGHT COVER	1	1
	20	2A727600	SHIELD 10X9X25,GASKET(230V Only)		3
	21	2A704120	MOUNT,HINGE COVER	1	1
●	22	2A704160	UPPER LEFT COVER	1	1
●	23	2A704100	RIGHT COVER,HINGE	1	1
●	24	2A704110	LEFT COVER,HINGE	1	1
	25	2A704220	MOUNT BASE,OPERATION UNIT	1	1
●	26	2A704400	UPPER LEFT COVER,DETACHING	1	1
●	27	2A704410	UPPER RIGHT COVER,DETACHING	1	1
●	28	2A724011	OPERATION UNIT(INCH)	1	
●	28	2A724021	OPERATION UNIT(METRIC)		1
	29	2A727340	WIRE,OPERATION UNIT PCB	1	1
	30	M2105040	NYLON CLAMP 6N,NK-6N	1	1
	31	2A027770	CORE 15-25X12(R)	1	1
	32	2AR26360	GROUND PLATE, SCANNER UNIT		4
	33	M2109200	LOCKING WIRE SADDLE,LWS-3S-2W	1	1
	34	2A627870	FRONT SHIELD,GASKET MAIN PCB(230V Only)		1
	35	18526360	SHIELD,GASKET ISU FRONT		4
	36	18526370	SHIELD,GASKET POWER SOURCE		2

- Parts with "●" are component parts or sub-assemblies of the assembly appearing immediately above them.
- Parts with "●" indicates the spare parts.

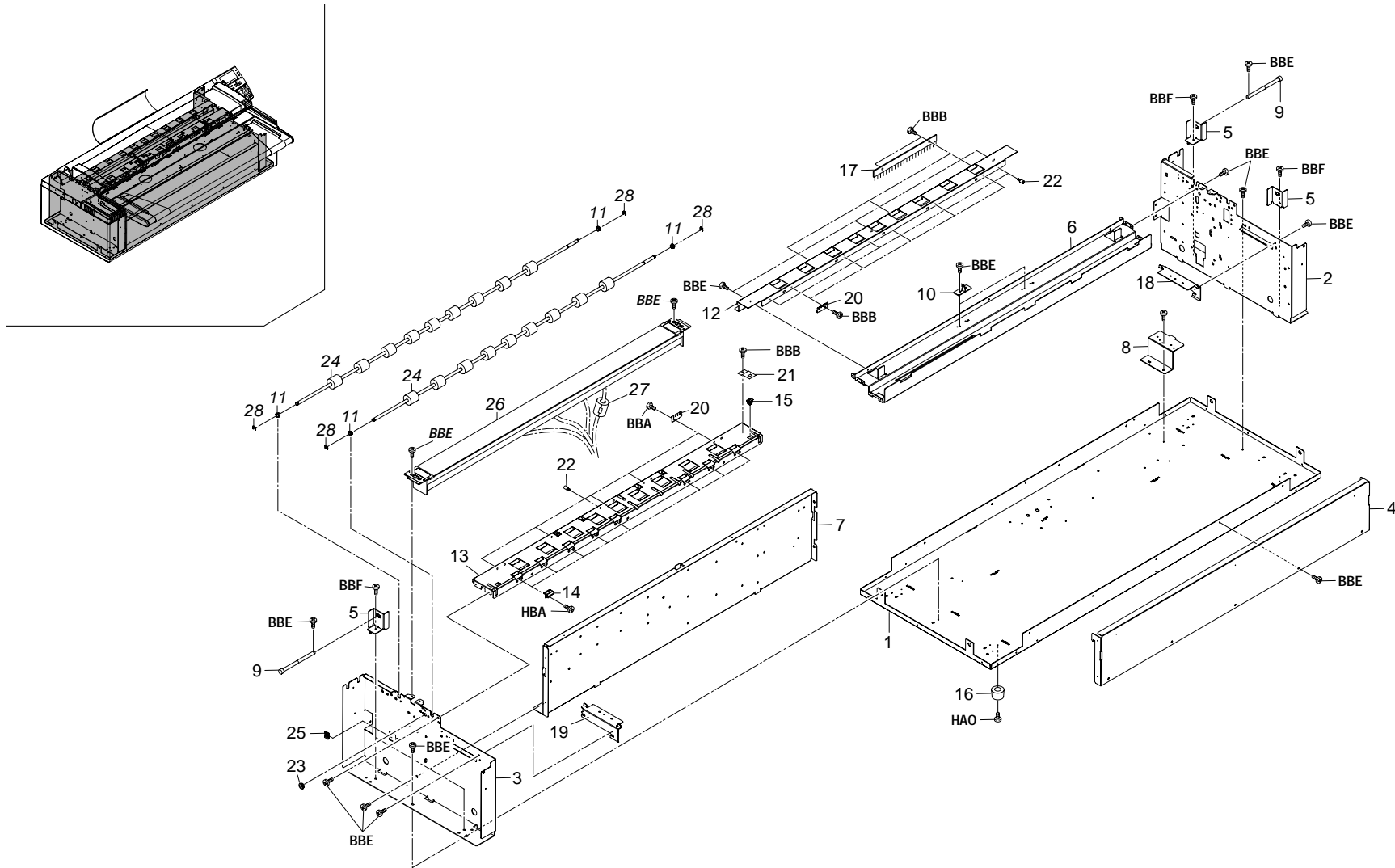


FIG. 2 FRAMES

3B0-1

SP	Ref. No.	Part. No.	Description	Quantity	
				120V	230V
	1	3B002010	BASE,MACHINE	1	1
	2	3B002020	RIGHT FRAME,MACHINE	1	1
	3	3B002030	LEFT FRAME,MACHINE	1	1
	4	3B002040	FRONT REINFORCEMENT,MACHINE	1	1
	5	3B002130	STOPPER,HANDLE	4	4
	6	3B013020	REAR STAY,SCANNER	1	1
	7	3B026020	MOUNT,PCB	1	1
	8	3B026050	MOUNT,DATA WIRE	1	1
	9	2AV02170	SHAFT,HANDLE	4	4
	10	2AZ13070	LOWER BUSHING, ORIGINAL FEED ROLLER	2	2
●	11	67322230	BUSHING 8	4	4
	12	2A713350	REAR GUIDE,SCANNER	1	1
	13	2A713402	FRONT GUIDE,SCANNER(METRIC)		1
	13	2A713702	FRONT GUIDE,SCANNER(INCH)	1	
	14	2A713420	GUIDE,ORIGINAL	8	8
●	15	35927420	SWITCH,SIZE	1	1
	16	65902670	CUSHION RUBBER	4	4
●	17	67813320	STATIC ELIMINATOR,ORIGINAL	3	3
	18	3B002050	RIGHT MOUNT,ORIGINAL TABLE	1	1
	19	3B002060	LEFT MOUNT,ORIGINAL TABLE	1	1
	20	2A726220	GROUND PLATE,CIS	10	10
	21	2A726240	COVER,ORIGINAL HOLDER SWITCH	1	1
	22	63511541	PIN,ADF	4	4
	23	M1203200	OPEN BUSHING,OCB-375	1	1
●	24	2A713370	LOWER ROLLER,ORIGINAL	2	2
	25	M2104260	EDGING,EDS-0607U(KITAGAWA)	1	1
●	26	2A709012	SENSOR A0,CIS	1	1
	27	33927590	CORE 7-15X18		1
●	28	2BC06910	STOPPER 6	4	4

- Parts with "●" are component parts or sub-assemblies of the assembly appearing immediately above them.
- Parts with "●" indicates the spare parts.

FIG. 3 ORIGINAL SET SECTION

3B0-1

SP	Ref. No.	Part. No.	Description	Quantity	
				120V	230V
	1	2A705101	LABEL,ORIGINAL JAM	1	1
	2	2A707300	SHAFT,ROLL	2	2
●	3	2A713280	TABLE,ORIGINAL(METRIC)		1
●	3	2A713450	TABLE,ORIGINAL(INCH)	1	
●	4	2A713510	RIGHT CURSOR,ORIGINAL	1	1
●	5	2A713520	LEFT CURSOR,ORIGINAL	1	1
	6	2A713530	MOUNT,ORIGINAL CURSOR	2	2
	7	2A723060	MOUNT,COOLING FAN	1	1
●	8	2A713590	LOWER RIGHT SEAL,CURSOR	1	1
●	9	2A713600	LOWER LEFT SEAL,CURSOR	1	1
●	10	2A713610	RIGHT GUIDE,CURSOR	1	1
●	11	2A713620	LEFT GUIDE,CURSOR	1	1
●	12	2A713630	RIGHT COVER,ORIGINAL TABLE	1	1
●	13	2A713640	LEFT COVER,ORIGINAL TABLE	1	1
	14	2A713690	SEAL,MOUNT ORIGINAL CURSOR	2	2
●	15	61806240	BUSHING,GUIDE	4	4
	16	2A723110	MOUNT,ORIGINAL SWITCH	2	
	17	74712810	REAR GUIDE CHIP ORIGINAL INSERTION	2	2
	18	3B027100	WIRE,ORIGINAL SIZE DETECTION SWITCH(INCH)	1	
	19	63227150	SWITCH L,FEED	2	
	20	M2105740	MINIATURE CLAMP,UAMS-05S-2	2	
	21	2A627870	FRONT SHIELD,GASKET MAIN PCB(230V Only)		3
	22	2A713020	LEFT FRAME,ORIGINAL	1	1
	23	2A713030	STAY,ORIGINAL	1	1
●	24	2A713061	FRONT GUIDE,ORIGINAL	1	1
	25	2A713070	REAR GUIDE,ORIGINAL	1	1
	26	2A713081	RIGHT HOOK,ORIGINAL	1	1
	27	2A713091	LEFT HOOK,ORIGINAL	1	1
	28	2A713110	INNER FULCRUM PLATE,ORIGINAL	2	2
	29	2A713150	INNER PIN,ORIGINAL HOOK(M3)	2	2
●	30	2A713740	INNER UPPER BELT,ORIGINAL	1	1
	31	2A713170	SUPPORT PLATE,ORIGINAL SHUTTER	2	2
	32	2A713180	SHUTTER,ORIGINAL REGISTRATION	1	1
	33	2A713190	FRONT STAY,ORIGINAL	1	1
	34	2A713200	REAR STAY,ORIGINAL	1	1
●	35	2A713230	FRONT ROLLER,ORIGINAL HOLDER	1	1
●	36	2A713240	COVER,ORIGINAL HOLDER	1	1
●	37	2A713250	INNER COVER,ORIGINAL	1	1
	38	2A713260	LEVER,ORIGINAL HOOK	2	2
●	39	2A713430	INNER ROLLER,ORIGINAL HOLDER	1	1

SP	Ref. No.	Part. No.	Description	Quantity	
				120V	230V
●	40	2A713440	REAR ROLLER,ORIGINAL HOLDER	1	1
	41	2A713710	INNER RIGHT HOOK,ORIGINAL	1	1
	42	2A713720	INNER LEFT HOOK,ORIGINAL	1	1
	43	2A727300	JUNCTION WIRING,ORIGINAL ROLLER SWITCH	1	1
●	44	49021700	BUSHING	2	2
●	45	33302070	PIN,SLIDER	2	2
●	46	34013270	SPRING,ORIGINAL ROLLER	2	2
●	47	2BC06910	STOPPER 6	9	9
●	48	35327400	SWITCH,FEED	1	1
●	49	67322230	BUSHING 8	2	2
●	50	67813111	COLLAR, UPPER MIDDLE ORIGINAL ROLLER	2	2
	51	67813120	FILM,ORIGINAL SWITCH	1	1
	52	71821610	COLLAR,EJECT	1	1
●	53	72107160	BUSHING 6,LOWER REGISTRATION ROLLER	2	2
	54	72418140	SPRING, BLADE	2	2
●	55	2A713730	INNER UPPER PULLEY 28,ORIGINAL	2	2
●	56	77706461	PRESSING SPRING	2	2
●	57	2A713750	SPRING,ORIGINAL COVER RELEASE	1	1
	58	M2105730	MINIATURE CLAMP,UAMS-07-0	2	2
	59	M2107120	BINDING BAND SG-130	2	2
	60	2A713010	RIGHT FRAME,ORIGINAL	1	1
	61	2A627870	FRONT SHIELD,GASKET MAIN PCB(230V Only)		3
●	62	2A727360	REAR SWITCH, ORIGINAL FEED	6	6
	63	67813311	MOUNT,ORIGINAL SWITCH	6	6
	64	M2105730	MINIATURE CLAMP,UAMS-07-0	13	13
	65	M2107120	BINDING BAND SG-130	3	3
●	66	2AZ13070	LOWER BUSHING, ORIGINAL FEED ROLLER	2	2
	67	2A713331	FRONT STAY,SCANNER	1	1
	68	2A727270	JUNCTION WIRING,SCANNER	1	1
	69	2A713320	LEFT MOUNT,HINGE	1	1
	70	2A713040	RIGHT MOUNT,ORIGINAL HINGE	1	1
	71	2A713050	LEFT MOUNT,ORIGINAL HINGE	1	1
	72	2A713310	RIGHT MOUNT,HINGE	1	1
	73	34013070	RIGHT HINGE,ORIGINAL HOLDER	1	1
	74	34013080	LEFT HINGE,ORIGINAL HOLDER	1	1
	75	2A727610	SHIELD 10X8X30,GASKET		2
	76	3B005100	LABEL,NAME PLATE	1	1
	77	2A727610	SHIELD 10X8X30,GASKET	2	2
	78	2A713770	FILM,ORIGINAL HOLDER SWITCH	1	1

- Parts with "●" are component parts or sub-assemblies of the assembly appearing immediately above them.
- Parts with "●" indicates the spare parts.

FIG. 4 DRIVING & ELECTRICAL COMPONENTS

3B0-1

SP	Ref. No.	Part. No.	Description	Quantity	
				120V	230V
●	1	2AZ01110	ORIGINAL MOTOR PCB ASS'Y	1	1
●	2	2AZ22500	PULLEY 40,ORIGINAL	3	3
●	3	2A700660	ORIGINAL MOTOR ASS'Y	1	1
●	4	•18527210	MOTOR,EJECT	1	1
●	5	•18821120	PULLEY,SWITCH BACK MOTOR	1	1
●	6	•2A722200	MOUNT,ORIGINAL MOTOR	1	1
●	7	2A701031	SCANNER MAIN PCB ASS'Y	1	1
●	8	•2A701140	SCANNER BOOT ROM ASS'Y	1	1
●	9	•2A728031	SCANNER MAIN PCB	1	1
●	10	2A701042	IPU ASS'Y		1
●	10	2A701200	IPU ASS'Y(INCH)	1	
●	11	71802210	PIN,DRUM LIFT	1	1
●	12	72308120	SPRING, CLEANING BLADE	1	1
●	13	72622141	TENSION PULLEY 20	1	1
●	14	2A701193	SCANNER POWER SOURCE PCB ASS'Y	1	1
●	15	3B027060	WIRE,SCANNER POWER SOURCE	1	1
●	16	2A722250	TENSION PLATE,ORIGINAL	1	1
●	17	2A722360	BELT,ORIGINAL DRIVE	1	1
●	18	3B027070	WIRE,INTERFACE	1	1
●	19	2A727240	WIRE,SCANNER OPERATION UNIT	1	1
●	20	2A727291	WIRE,SCANNER	1	1
●	21	2A727650	LEFT JUNCTION WIRING,INVERTER PCB	1	1
●	22	2A728040	INVERTER PCB	2	2
●	23	M2107120	BINDING BAND SG-130	1	1
●	24	M2108190	SPACER,KGLS-10S	8	8
●	25	M2108290	SPACER,KGPS-10S	1	1
●	26	M2104280	EDGING,EDS-25L(KITAGAWA)	1	1
●	27	3B027030	WIRE,SCANNER UNIT	1	1
●	28	3B027050	WIRE,CIS DATA	1	1
●	29	2A701051	ISU ASS'Y	1	1
●	30	M2105730	MINIATURE CLAMP,UAMS-07-0	5	5
●	31	M2108140	SPACER,KGLS-6S	17	17
●	32	M2108150	SPACER,KGPS-6S	8	8
●	33	M2109200	LOCKING WIRE SADDLE,LWS-3S-2W	12	12
●	34	M2505150	CLAMP,GNK-5N(NIKKO)	5	5
●	35	M7005010	CLAMP,EMT-3N(TAKEUCHI)	2	2
●	36	M2505030	NYLON CLAMP SL-5N	2	2
●	37	2A027770	CORE 15-25X12(R)		2
●	38	2A627940	CORE 10-20X10(230V Only)		1
●	39	2A627930	CORE 11-25X14(230V Only)		3
●	40	33927590	CORE 7-15X18		1
●	41	2A727730	JUNCTION WIRING,SCANNER PCB(INCH)	1	

- Parts with "●" are component parts or sub-assemblies of the assembly appearing immediately above them.
- Parts with "●" indicates the spare parts.

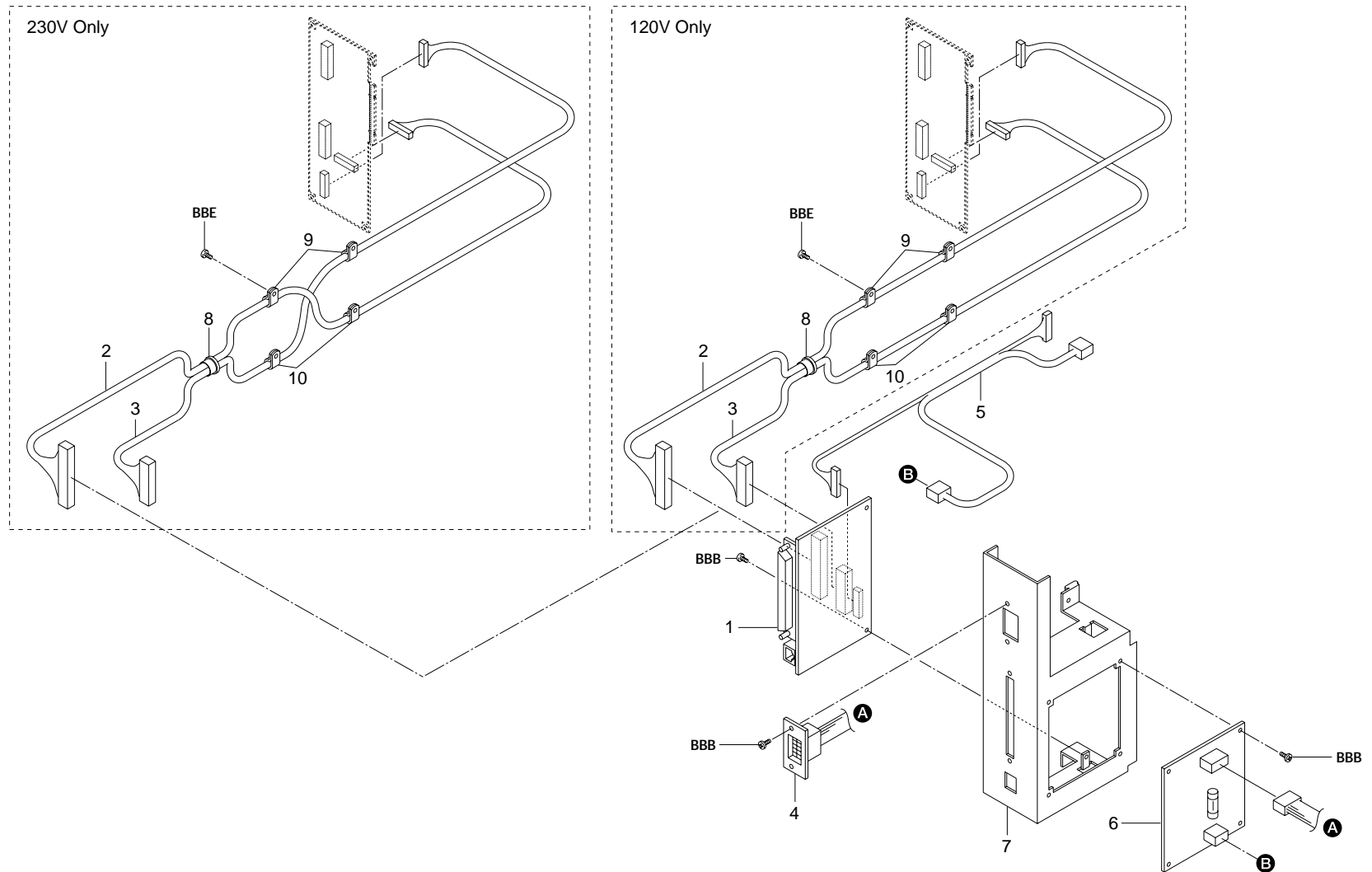


FIG. 5 ACCESSORIES

3B0

SP	Ref. No.	Part. No.	Description	Quantity	
				120V	230V
●	1	3B001010	NETWORK JUNCTION PCB ASS'Y	1	1
	2	3B027010	JUNCTION WIRING A,INTERFACE PCB	1	1
	3	3B027020	JUNCTION WIRING B,INTERFACE PCB	1	1
	4	3B027040	JUNCTION WIRING,SCANNER POWER SOURCE OUT	1	1
	5	3B027080	JUNCTION WIRING,PRINTER UNIT	1	1
●	6	3B028010	POWER SOURCE JUNCTION PCB	1	1
	7	2A726910	MOUNT,SCANNER INTERFACE	1	1
	8	M1203510	OPEN BUSHING,OCB-1000	1	1
	9	M2505150	CLAMP,GNK-5N(NIKKO)	2	2
	10	M2505180	CLAMP,GNK-3N(NIKKO)	2	2

- Parts with "●" are component parts or sub-assemblies of the assembly appearing immediately above them.
- Parts with "●" indicates the spare parts.

INDEX

3B0-1

SP	Part. No.	Description	Quantity		Fig. No.
			120V	230V	
	18526360	SHIELD,GASKET ISU FRONT		4	1
	18526370	SHIELD,GASKET POWER SOURCE		2	1
●	18527210	MOTOR,EJECT	1	1	4
●	18821120	PULLEY,SWITCH BACK MOTOR	1	1	4
	2AR26360	GROUND PLATE,SCANNER UNIT		4	1
●	2AR93270	PARTS,LCD PCB(SP)	1	1	1
	2AV02170	SHAFT,HANDLE	4	4	2
●	2AZ01110	ORIGINAL MOTOR PCB ASS'Y	1	1	4
	2AZ13070	LOWER BUSHING, ORIGINAL FEED ROLLE	4	4	2,3
	2AZ13171	MOUNT,ORIGINAL HOLDER	2	2	1
	2AZ13180	GUIDE,ORIGINAL LOOP	1	1	1
	2AZ13190	COLLAR,ORIGINAL LOOP	2	2	1
	2AZ13321	HOLDER,ORIGINAL	2	2	1
●	2AZ22500	PULLEY 40,ORIGINAL	3	3	4
	2A027770	CORE 15-25X12(R)	1	3	1,4
	2A627870	FRONT SHIELD,GASKET MAIN PCB(230V Only)		7	1,3
	2A627930	CORE 11-25X14(230V Only)		3	4
	2A627940	CORE 10-20X10(230V Only)		1	4
●	2A700660	ORIGINAL MOTOR ASS'Y	1	1	4
●	2A701031	SCANNER MAIN PCB ASS'Y	1	1	4
●	2A701042	IPU ASS'Y		1	4
●	2A701051	ISU ASS'Y	1	1	4
●	2A701140	SCANNER BOOT ROM ASS'Y	1	1	4
●	2A701193	SCANNER POWER SOURCE PCB ASS'Y	1	1	4
●	2A701200	IPU ASS'Y(INCH)	1		4
●	2A704100	RIGHT COVER,HINGE	1	1	1
●	2A704110	LEFT COVER,HINGE	1	1	1
	2A704120	MOUNT,HINGE COVER	2	2	1
●	2A704151	UPPER RIGHT COVER	1	1	1
●	2A704160	UPPER LEFT COVER	1	1	1
	2A704220	MOUNT BASE,OPERATION UNIT	1	1	1
●	2A704400	UPPER LEFT COVER,DETACHING	1	1	1
●	2A704410	UPPER RIGHT COVER,DETACHING	1	1	1
	2A705101	LABEL,ORIGINAL JAM	1	1	3
	2A707300	SHAFT,ROLL	2	2	3
●	2A709012	SENSOR A0,CIS	1	1	2
	2A713010	RIGHT FRAME,ORIGINAL	1	1	3
	2A713020	LEFT FRAME,ORIGINAL	1	1	3
	2A713030	STAY,ORIGINAL	1	1	3
	2A713040	RIGHT MOUNT,ORIGINAL HINGE	1	1	3

SP	Part. No.	Description	Quantity		Fig. No.
			120V	230V	
	2A713050	LEFT MOUNT,ORIGINAL HINGE	1	1	3
●	2A713061	FRONT GUIDE,ORIGINAL	1	1	3
	2A713070	REAR GUIDE,ORIGINAL	1	1	3
	2A713081	RIGHT HOOK,ORIGINAL	1	1	3
	2A713091	LEFT HOOK,ORIGINAL	1	1	3
	2A713110	INNER FULCRUM PLATE,ORIGINAL	2	2	3
	2A713150	INNER PIN,ORIGINAL HOOK(M3)	2	2	3
	2A713170	SUPPORT PLATE,ORIGINAL SHUTTER	2	2	3
	2A713180	SHUTTER,ORIGINAL REGISTRATION	1	1	3
	2A713190	FRONT STAY,ORIGINAL	1	1	3
	2A713200	REAR STAY,ORIGINAL	1	1	3
●	2A713230	FRONT ROLLER,ORIGINAL HOLDER	1	1	3
●	2A713240	COVER,ORIGINAL HOLDER	1	1	3
●	2A713250	INNER COVER,ORIGINAL	1	1	3
	2A713260	LEVER,ORIGINAL HOOK	2	2	3
●	2A713280	TABLE,ORIGINAL(METRIC)		1	3
	2A713310	RIGHT MOUNT,HINGE	1	1	3
	2A713320	LEFT MOUNT,HINGE	1	1	3
	2A713331	FRONT STAY,SCANNER	1	1	3
	2A713350	REAR GUIDE,SCANNER	1	1	2
●	2A713370	LOWER ROLLER,ORIGINAL	2	2	2
	2A713402	FRONT GUIDE,SCANNER(METRIC)		1	2
	2A713420	GUIDE,ORIGINAL	8	8	2
●	2A713430	INNER ROLLER,ORIGINAL HOLDER	1	1	3
●	2A713440	REAR ROLLER,ORIGINAL HOLDER	1	1	3
●	2A713450	TABLE,ORIGINAL(INCH)	1		3
●	2A713510	RIGHT CURSOR,ORIGINAL	1	1	3
●	2A713520	LEFT CURSOR,ORIGINAL	1	1	3
	2A713530	MOUNT,ORIGINAL CURSOR	2	2	3
●	2A713590	LOWER RIGHT SEAL,CURSOR	1	1	3
●	2A713600	LOWER LEFT SEAL,CURSOR	1	1	3
●	2A713610	RIGHT GUIDE,CURSOR	1	1	3
●	2A713620	LEFT GUIDE,CURSOR	1	1	3
●	2A713630	RIGHT COVER,ORIGINAL TABLE	1	1	3
●	2A713640	LEFT COVER,ORIGINAL TABLE	1	1	3
	2A713690	SEAL,MOUNT ORIGINAL CURSOR	2	2	3
	2A713702	FRONT GUIDE,SCANNER(INCH)	1		2
	2A713710	INNER RIGHT HOOK,ORIGINAL	1	1	3
	2A713720	INNER LEFT HOOK,ORIGINAL	1	1	3
●	2A713730	INNER UPPER PULLEY 28,ORIGINAL	2	2	3

• Parts with "●" indicates the spare parts.

SP	Part. No.	Description	Quantity		Fig. No.
			120V	230V	
●	2A713740	INNER UPPER BELT,ORIGINAL	1	1	3
●	2A713750	SPRING,ORIGINAL COVER RELEASE	1	1	3
	2A713770	FILM,ORIGINAL HOLDER SWITCH	1	1	3
	2A722200	MOUNT,ORIGINAL MOTOR	1	1	4
	2A722250	TENSION PLATE,ORIGINAL	1	1	4
●	2A722360	BELT,ORIGINAL DRIVE	1	1	4
	2A723060	MOUNT,COOLING FAN	1	1	3
	2A723110	MOUNT,ORIGINAL SWITCH	2		3
●	2A724011	OPERATION UNIT(INCH)	1		1
●	2A724021	OPERATION UNIT(METRIC)		1	1
	2A726220	GROUND PLATE,CIS	10	10	2
	2A726240	COVER,ORIGINAL HOLDER SWITCH	1	1	2
	2A726910	MOUNT,SCANNER INTERFACE	1	1	5
	2A727240	WIRE,SCANNER OPERATION UNIT	1	1	4
	2A727270	JUNCTION WIRING,SCANNER	1	1	3
	2A727291	WIRE,SCANNER	1	1	4
	2A727300	JUNCTION WIRING,ORIGINAL ROLLER SW	1	1	3
	2A727340	WIRE,OPERATION UNIT PCB	1	1	1
●	2A727360	REAR SWITCH, ORIGINAL FEED	6	6	3
	2A727600	SHIELD 10X9X25,GASKET(230V Only)		3	1
	2A727610	SHIELD 10X8X30,GASKET	2	4	3
	2A727650	LEFT JUNCTION WIRING,INVERTER PCB	1	1	4
	2A727730	JUNCTION WIRING,SCANNER PCB(INCH)	1		4
	2A728031	SCANNER MAIN PCB	1	1	4
●	2A728040	INVERTER PCB	2	2	4
●	2BC06910	STOPPER 6	13	13	2,3
	3AV27010	SHIELD,GASKET(230V Only)		1	1
●	3B001010	NETWORK JUNCTION PCB ASS'Y	1	1	5
	3B002010	BASE,MACHINE	1	1	2
	3B002020	RIGHT FRAME,MACHINE	1	1	2
	3B002030	LEFT FRAME,MACHINE	1	1	2
	3B002040	FRONT REINFORCEMENT,MACHINE	1	1	2
	3B002050	RIGHT MOUNT,ORIGINAL TABLE	1	1	2
	3B002060	LEFT MOUNT,ORIGINAL TABLE	1	1	2
	3B002070	MOUNT,UPPER FRONT RIGHT COVER	1	1	1
	3B002080	MOUNT,UPPER FRONT LEFT COVER	1	1	1
	3B002100	MOUNT,RIGHT COVER	1	1	1
	3B002130	STOPPER,HANDLE	4	4	2
	3B002140	MOUNT,LEFT COVER	1	1	1
	3B002150	MOUNT,UPPER COVER	2	2	1

SP	Part. No.	Description	Quantity		Fig. No.
			120V	230V	
●	3B004010	FRONT COVER	1	1	1
●	3B004020	RIGHT COVER	1	1	1
●	3B004030	LEFT COVER	1	1	1
●	3B004080	REAR COVER	1	1	1
	3B005100	LABEL,NAME PLATE	1	1	3
	3B013020	REAR STAY,SCANNER	1	1	2
	3B026020	MOUNT,PCB	1	1	2
	3B026040	INNER, REAR COVER	1	1	1
	3B026050	MOUNT,DATA WIRE	1	1	2
	3B027010	JUNCTION WIRING A,INTERFACE PCB	1	1	5
	3B027020	JUNCTION WIRING B,INTERFACE PCB	1	1	5
	3B027030	WIRE,SCANNER UNIT	1	1	4
	3B027040	JUNCTION WIRING,SCANNER POWER SOUR	1	1	5
	3B027050	WIRE,CIS DATA	1	1	4
	3B027060	WIRE,SCANNER POWER SOURCE	1	1	4
	3B027070	WIRE,INTERFACE	1	1	4
	3B027080	JUNCTION WIRING,PRINTER UNIT	1	1	5
	3B027100	WIRE,ORIGINAL SIZE DETECTION SWITCH(INCH)	1		3
●	3B028010	POWER SOURCE JUNCTION PCB	1	1	5
●	33302070	PIN,SLIDER	2	2	3
	33927590	CORE 7-15X18		2	2,4
	34013070	RIGHT HINGE,ORIGINAL HOLDER	1	1	3
	34013080	LEFT HINGE,ORIGINAL HOLDER	1	1	3
●	34013270	SPRING,ORIGINAL ROLLER	2	2	3
●	35327400	SWITCH,FEED	1	1	3
●	35927420	SWITCH,SIZE	1	1	2
	36527090	SHIELD 60,GASKET		4	1
●	49021700	BUSHING	2	2	3
●	61806240	BUSHING,GUIDE	4	4	3
	63227150	SWITCH L,FEED	2		3
	63511541	PIN,ADF	4	4	2
	65902670	CUSHION RUBBER	4	4	2
●	67322230	BUSHING 8	6	6	2,3
●	67813111	COLLAR, UPPER MIDDLE ORIGINAL ROLL	2	2	3
	67813120	FILM,ORIGINAL SWITCH	1	1	3
	67813311	MOUNT,ORIGINAL SWITCH	6	6	3
●	67813320	STATIC ELIMINATOR,ORIGINAL	3	3	2
	71802210	PIN,DRUM LIFT	1	1	4
	71821610	COLLAR,EJECT	1	1	3
●	72107160	BUSHING 6,LOWER REGISTRATION ROLLE	2	2	3

• Parts with "●" indicates the spare parts.

SP	Part. No.	Description	Quantity		Fig. No.
			120V	230V	
	72308120	SPRING, CLEANING BLADE	1	1	4
	72418140	SPRING, BLADE	2	2	3
●	72622141	TENSION PULLEY 20	1	1	4
	74712810	REAR GUIDE CHIP ORIGINAL INSERTION	2	2	3
●	77706461	PRESSING SPRING	2	2	3
	M1203200	OPEN BUSHING,OCB-375	1	1	2
	M1203510	OPEN BUSHING,OCB-1000	1	1	5
	M2104260	EDGING,EDS-0607U(KITAGAWA)	1	1	2
	M2104280	EDGING,EDS-25L(KITAGAWA)	1	1	4
	M2105040	NYLON CLAMP 6N,NK-6N	1	1	1
	M2105730	MINIATURE CLAMP,UAMS-07-0	20	20	3,4
	M2105740	MINIATURE CLAMP,UAMS-05S-2	2		3
	M2107120	BINDING BAND SG-130	6	6	3,4
	M2108140	SPACER,KGLS-6S	17	17	4
	M2108150	SPACER,KGPS-6S	8	8	4
	M2108190	SPACER,KGLS-10S	8	8	4
	M2108290	SPACER,KGPS-10S	1	1	4
	M2109200	LOCKING WIRE SADDLE,LWS-3S-2W	13	13	1,4
	M2505030	NYLON CLAMP SL-5N	2	2	4
	M2505150	CLAMP,GNK-5N(NIKKO)	7	7	4,5
	M2505180	CLAMP,GNK-3N(NIKKO)	2	2	5
	M7005010	CLAMP,EMT-3N(TAKEUCHI)	2	2	4

• Parts with "●" indicates the spare parts.

CLASSIFICATION OF THE SCREWS IN ILLUSTRATION

<u>REF.</u>	<u>ITEM #</u>	<u>DESCRIPTION</u>
AVE	B0024080	ROUND HEAD SCREW WITH SW.W M4X8
BAN	B1004060	BINDING SCREW CVM4X6
BBB	B1303050	BINDING SCREW BVM3X5 (BLACK)
BBE	B1304060	BINDING SCREW BVM4X6 (BLACK)
BBF	B1304080	BINDING SCREW BVM4X8 (BLACK)
BCF	B1104080	BINDING SCREW VM4X8 (CR)
BHF	B3314080	BINDING TAP-TITE P SCREW M4X08
BHV	B3313060	+BINDING TAP-TIGHT P BRONZE SCREW M3X06
BUA	B3314100	BINDING TAP-TITE P BRONZE SCREW M4X10
BUC	B3314120	M4X12 +BINDING TAP-TIGHT P SCREW
DJV	B5393040	W-POINT SET SCREW M3X04
E05	D1000500	STOP RING (E-5)
E07	D1000700	STOP RING (E-7)
HAK	B4003060	TRIPLE SEREW M3X6
HAO	B4043080	TRIPLE TAP-TITE P SCREW M3X08
HBA	B4303050	TRIPLE SCREW M3X5 (BLACK)
HCA	B4104060	TRIPLE SCREW M4X6(CHROMIUM)
HCF	B4104080	TRIPLE SCREW M4X08(CHROMIUM)

KYOCERA MITA EUROPE B.V.

Hoeksteen 40, 2132 MS Hoofddorp,
The Netherlands
Phone: (020) 6540000
Home page: <http://www.kyoceramita-europe.com>
Email: info@kyoceramita-europe.com

KYOCERA MITA NEDERLAND B.V.

Hoeksteen 40, 2132 MS Hoofddorp,
The Netherlands
Phone: (020) 5877200

KYOCERA MITA (UK) LIMITED

8 Beacontree Plaza
Gillette Way,
Reading RG2 0BS UK
Phone: (0118) 931 1500

KYOCERA MITA ITALIA S.P.A.

Via Verdi 89/91 20063 Cernusco sul Naviglio
(Milano) Italy
Phone: 02-92179 1

S.A. KYOCERA MITA BELGIUM N.V.

Hermesstraat 8A, 1930 Zaventem, Belgium
Phone: (02) 7209270

KYOCERA MITA FRANCE S.A.R.L.

Parc les Algorithmes
SAINT AUBIN
91194 GIF-SUR-YVETTE
France
Phone: (01) 69852600

KYOCERA MITA ESPAÑA S.A.

Edificio Mita, Avda. De Manacor Nº2,
Urb. Parque Rozas, Apartado de Correos 76,
28230 Las Rozas, Madrid, Spain
Phone: (91) 631-8392

KYOCERA MITA FINLAND OY

Kirvesmiehenkatu 4, 00810 Helsinki,
Finland
Phone: (09) 478-05200

KYOCERA MITA (SCHWEIZ) AG

Holzliwisen Industriestrasse 28,
8604 Volketswil, Switzerland
Phone: (01) 908 4949

KYOCERA MITA DEUTSCHLAND GMBH

Mollsfeld 12 40670 Meerbusch,
(Osterath) Germany
Phone: 02159-918120

KYOCERA MITA GMBH AUSTRIA

Eduard-Kittenberger-Gasse 95,
1230, Wien, Austria
Phone: (01) 86338-0

KYOCERA MITA SVENSKA AB

Vretenvagen 2
171 54 Solna, Sweden
Phone: (08) 546 550 00

KYOCERA MITA NORGE

Postboks 150 Oppsal, NO 0619 Oslo
Olaf Helsetsvai 6, NO 0694 Oslo
Phone: (22) 62 73 00

KYOCERA MITA DANMARK A/S

Industrivej 11, DK-4632 Bjæverskov,
Denmark
Phone: (56) 871100

KYOCERA MITA PORTUGAL LDA.

Rua de Campolide,
nº56-5º dto,
1070-026, Lisbon, Portugal
Phone: (21) 09-00

KYOCERA MITA SOUTH AFRICA (PTY) LTD.

UNIT 3, "Kyalami Crescent,"
Kyalami Business Park,
1685 Midrand, South Africa
Phone: (11) 466-3290

KYOCERA MITA AMERICA, INC.

Headquarters:
225 Sand Road, P.O. Box 40008,
Fairfield, New Jersey 07004-0008,
U.S.A.
Phone: (973) 808-8444

KYOCERA MITA AUSTRALIA PTY. LTD.

Level 3, 6-10 Talavera Road, North Ryde,
N.S.W. 2113 Australia
Phone: (02) 9888-9999

KYOCERA MITA NEW ZEALAND LTD.

1-3 Parkhead Place,
Albany, Auckland,
New Zealand
Phone: (09) 415-4517

KYOCERA MITA (THAILAND) CORP., LTD.

9/209 Ratchada-Prachachem Road,
Bang Sue, Bangkok 10800, Thailand
Phone: (02) 586-0320

KYOCERA MITA SINGAPORE PTE LTD.

121 Genting Lane, 3rd Level,
Singapore 349572
Phone: 67418733

KYOCERA MITA HONG KONG LIMITED

11/F., Mita Centre,
552-566, Castle Peak Road,
Tsuen Wan, New Territories,
Hong Kong
Phone: 24297422

KYOCERA MITA TAIWAN CORPORATION

7F-1~2, No.41, Lane 221, Gangchi Rd.
Neihu District, Taipei, Taiwan, 114. R.O.C.
Phone: (02) 87511560

KYOCERA MITA CORPORATION

2-28, 1-chome, Tamatsukuri, Chuo-ku
Osaka 540-8585, Japan
Phone: (06) 6764-3555

© 2002 KYOCERA MITA CORPORATION

 **KYOCERA** is a trademark of Kyocera Corporation

mita is a registered trademark of KYOCERA MITA CORPORATION

Printed in Holland